

TAKE A SIP OF SUCCESS

JUST FOR YOU

**20%
OFF**



2023 SPRING
Drinkware Collection

20% OFF

Drinkware Collection

USE CODE

DRINKWARE20

at

www.pens.com/drinkware20

Or scan the QR code!



From Morning Coffee to Happy Hour

Promotional drinkware is there for every part of your customer's day. Shop our Spring Drinkware Collection to **find the style that suits your brand**—whether you want a sporty bottle to rep your gym or a toast-worthy tumbler for your next event.

Best of all, **we make it easy to personalize**. So add your website, logo, or even your Instagram handle, and get your brand seen with every sip.

Enjoy **20% off** when you shop these styles at www.pens.com/drinkware20.

Featured in this catalog:



TUMBLERS



SUSTAINABLE STYLES



MUGS AND CUPS



WATER BOTTLES

GUIDE to key features:



BEST VALUE



TOP SELLER



HIGH CAPACITY



MADE IN THE USA



INSULATED (HOT / COLD)



BPA FREE



SUSTAINABLE

LET YOUR BRAND TRAVEL

GRANDE BIG SUR DOUBLE-WALL TUMBLER (WBL)



Customers will love hitting the road with these best-selling, double-wall travel mugs.

Available from 50 units

Capacity: 16 oz. **Product size:** 7.01" H x 3.39" Dia

Material: Stainless Steel and Plastic

Product colors: Blue, Green, Black, Red



SPILL-RESISTANT LID



AS LOW AS
\$2.89

\$2.31*
EACH

TAKE 20% OFF
with code

DRINKWARE20 at
www.pens.com/drinkware20



MAKE MARKETING A PICNIC

GIA STAINLESS STEEL VACUUM-INSULATED WINE GLASS WITH LID (WCJ)



Perfect for outdoor events! For elegant branding that enhances any occasion, customize the Gia Stainless Steel Vacuum-Insulated Wine Glass with Lid.

Available from 24 units

Capacity: 11 oz.

Product size: 4.45" H x 3.47" Dia

Material: Stainless steel

Product colors: Black, Chrome, Red, Royal Blue, White, Rose Gold



AS LOW AS
\$6.68
\$5.34*
EACH

SERVE UP SOMETHING NEW

ELI STAINLESS STEEL VACUUM-INSULATED TRAVEL MUG (WBV)



Travel in style. With generous room for drinks, this large insulated tumbler ensures they'll enjoy even more with your brand.

Available from 24 units

Capacity: 22 oz.

Product size: 7.68" H x 3.39" Dia

Material: Stainless steel

Product colors: Black, Blue, Lime Green, Orange, Red, White



AS LOW AS
\$7.10
\$5.68*
EACH



★★★★★ Stays hot
"This travel mug keeps my tea hot for hours. Being vacuum sealed you really can notice the difference. Fits right in my cup holder with no problems. This is a great cup to have if you travel far and want your drink to stay hot."

TAKE 20% OFF
with code
DRINKWARE20 at
www.pens.com/drinkware20



AS LOW AS
\$8.15
\$6.52*
EACH



TAKE YOUR BRAND FURTHER

DOUBLE WALL STAINLESS STEEL LIZA TUMBLER (WCK)



Top of the line clientele deserve a top of the line promotional tumbler. Quality construction keeps drinks hot up to 12 hours and cold for up to 24.

Available from 24 units

Capacity: 18 oz

Product Size: 10.08" H x 2.87" Dia

Material: Stainless Steel

Product Color: Blue, Black, Red, Gray, White

Why choose PROMOTIONAL DRINKWARE?

Because it pays to upgrade your customer's day. Daily convenience for them is more visibility for you.



HIGHLIGHT YOUR BRAND MESSAGE



78%**
of the consumers own promotional drinkware



Drinkware offers plenty of space to show off **your logo, company name, and website.**

DEVELOP BRAND RECOGNITION!



Promotional drinkware generates **1,400**** impressions throughout its lifetime



Help customers reduce their single-use waste by **offering reusable** travel mugs, tumblers, and bottles.

Find the perfect match for your brand at www.pens.com/drinkware20

**Source : Ad Impressions Study 2019

START THE DAY OFF RIGHT

DESIGN WRAP CERAMIC MUG (MUG)



A classic in every cupboard. Mugs are the perfect way to get your brand seen with every beverage enjoyed. Choose from stock design templates (events, industries, trends, and more), upload your own art, or add your logo to a solid background color. The hardest part is deciding which one to choose. Your art gets wrapped around the mug for full coverage and full brand visibility.

Available from 72 units

Capacity: 11 oz

Product size: 3.81" H x 3.27" Dia

Material: Ceramic

Also available
in 15 oz



AS LOW AS
\$1.75
\$1.40*
EACH



★★★★★ Well worth the money

"This was a phenomenal deal for what we got. Our logo is a tough one to duplicate, and the colors and design were spot on."

WARM UP YOUR BRAND

13 OZ. ENAMEL CAMPFIRE MUG (MUW)



Customize these retro campfire mugs, perfect for toasting up by the fire with friends.

Available from 72 units

Capacity: 13 oz

Product Size: 3.15" H x 3.15" Dia

Material: Enamel Coated Body and Handle: Iron.

Trim: Stainless Steel

Product Color: Black, Navy Blue, White



AS LOW AS
\$4.48
\$3.58*
EACH



TAKE 20% OFF
with code

DRINKWARE20 at

www.pens.com/drinkware20



CREATE A KEEPSAKE

AVA STADIUM CUP (WBS)



Customize these fun stadium cups for your next event so attendees can take home more than the memories.

Available from 250 units

Capacity: 16 oz

Product Size: 4.45" H x 3.56" Dia

Material: Polypropylene Plastic

Product Color: Neon Green, Neon Orange, Royal Blue, Translucent Purple, Translucent Red, Red, Black, Translucent Blue, Neon Pink, White, Yellow

AS LOW AS
\$0.69
\$0.55*
EACH



GENERATE A BUZZ

COLLAPSIBLE CAN COOLER (YCD)



With custom collapsible can coolers, every event's a hit. Cheers to cool branding!

Available from 150 units

Product size: 5.12" H x 3.94" W

Material: Polyester with Foam

Product colors:

Red, Black, Royal Blue, Turquoise, Lime Green, Orange, Assorted

AS LOW AS
\$0.58
\$0.46*
EACH



WELCOME NEW CLIENTS

POOL PAL TUMBLER (WBC)



Show that you value new customers by offering them a branded tumbler. They'll love the included straw for sipping on smoothies.

Available from 120 units

Capacity: 22 oz

Product size:

3.67" W x 5.76" H x 2.57" D

Material: Polypropylene

Product Color Translucent: Orange, Purple, Red, Lime, Blue, Smoke, Clear



AS LOW AS
\$1.33
\$1.06*
EACH

TAKE 20% OFF
with code

DRINKWARE20 at

www.pens.com/drinkware20



UPGRADE THEIR MORNING ROUTINE

GRANDE TWO-TONE MAREN CERAMIC BISTRO MUG (MUO)



Everyone needs a big mug to feel their coziest, so offer customers one they'll love. It's got a two-tone twist to get you noticed.

Available from 72 units

Capacity: 16 oz

Product Size: 4.07" H x 3.69" Dia

Material: Ceramic

Product Color: White

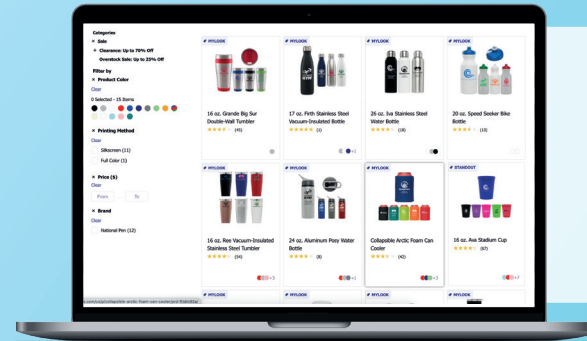
Trim Color: Black, Blue, Red, Lime Green



AS LOW AS
\$2.66

\$2.13*
EACH

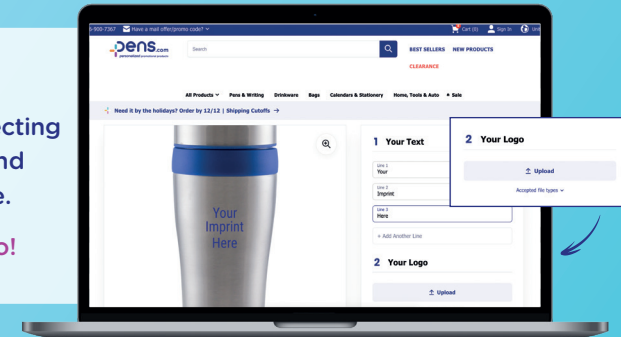
HOW TO ORDER ONLINE



1
Go to
www.pens.com/drinkware20
and select your product

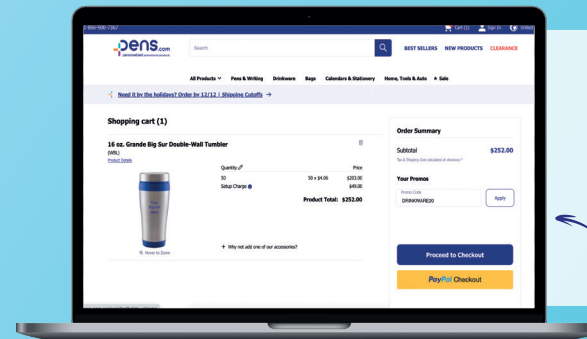
2
Personalize your order by selecting the quantity, desired color, and adding your custom message.

You can also upload your logo!

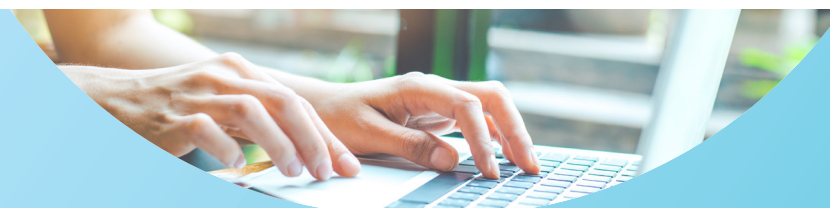


3
Apply code **DRINKWARE20** to your cart.

Your Promos
Promo Code
DRINKWARE20



4 Checkout



GET BRAND OUT THERE

9 OZ. JULIAN STAINLESS STEEL TUMBLER (WDT)



For merch they'll accessorize with, put your logo on this copper lined bottle with a matte finish and bamboo lid.

Available from 24 units

Capacity: 9 oz

Product Size : 4.84" H x 2.91" Dia

Material: Stainless Steel

Lid: Bamboo

Product Color: Black, Cream, Navy Blue



AS LOW AS
\$9.23
\$7.38*
EACH

BAMBOO LID



MAKE IT WOW WORTHY

20 OZ. BROOKE FROSTED GLASS BOTTLE (WDK)



From yoga to brunch, this frosted glass bottle will get your logo noticed all over town.

Available from 24 units

Capacity: 20 oz

Product Size: 9.25" H x 2.6" Dia

Material : Bottle: Frosted Borosilicate Glass;

Lid: Bamboo

Product Color: Clear, Dark Blue, Light Blue



AS LOW AS
\$5.11
\$4.09*
EACH

BAMBOO LID



TAKE 20% OFF
with code

DRINKWARE20 at

www.pens.com/drinkware20



OFFER SUSTAINABLE STYLE

17 OZ. VIDA RPET BOTTLE (WDS)



Share your values with promotions that have a light impact on the planet, like this bottle made from recycled plastic (RPET).

Available from 60 units

Capacity: 17 oz

Product Size: 7.87" H x 2.56" Dia

Material: RPET - Recycled Plastic

Product Color: Gray, Light Blue, Dark Blue, Clear



MADE FROM
RECYCLED PLASTIC



AS LOW AS
\$1.85

\$1.48*
EACH

STAY ON TREND

GRANDE WHEAT STRAW COFFEE CUP (WCQ)



Offer reusable coffee cups featuring your logo, earthy tones, and a construction that uses less plastic by incorporating reclaimed wheat straw.

Available from 40 units

Capacity: 16 oz

Product size: 7.24" H x 2.81" Dia

Material: Wheat Straw Polypropylene : 51% Wheat + 48% PP

Product Color: Caribbean Blue, Forest Green, Cream, Campfire Orange, Light Gray, Midnight Blue



AS LOW AS
\$2.95

\$2.36*
EACH

TAKE 20% OFF
with code

DRINKWARE20 at

www.pens.com/drinkware20



STYLE FOR EVERY SETTING

IVA STAINLESS STEEL WATER BOTTLE (WCO)



Sporty yet stylish! From the office to the gym, it's easy to impress with the lightweight Iva Stainless Steel Water Bottle.

Available from 48 units

Capacity: 26 oz

Product size: 9.76" H x 2.82" Dia

Material: Stainless steel

Product colors: Black, Chrome, White



CHROME SCREW TO AVOID LEAK OR SPILL



AS LOW AS
\$4.21

\$3.37*
EACH



POOLSIDE PROMOTING? YES, PLEASE.

FIRTH STAINLESS STEEL VACUUM-INSULATED BOTTLE (WCI)



Sit back and relax. This vacuum-insulated bottle is designed to keep drinks hot or cold for up to 12 hours. That's branding they can rely on.

Available from 24 units

Capacity: 17 oz.

Product size: 10.16" H x 2.8" Dia

Material: Stainless steel

Product colors: Black, Chrome, White, Navy blue



AS LOW AS
\$7.06

\$5.65*
EACH



TAKE 20% OFF
with code

DRINKWARE20 at

www.pens.com/drinkware20





AS LOW AS
\$0.73
\$0.58*
EACH

MORE MILES OUT OF EVERY PROMOTION

SPEED SEEKER BIKE BOTTLE (WBK)



This sports bottle is designed to get your name noticed outdoors and on the road.

Available from 200 units
Capacity: 20 oz.
Product size: 7.99" H x 2.84" Dia.
Material: White plastic
Lid colors: Blue, Green, Purple, Red, Smoke, Clear
Imprint colors: Matching lid colour



Also available
in 28 oz

GET YOUR NAME IN THE GAME

ALUMINUM POSY WATER BOTTLE (WCM)



Happy hydrating! This sturdy bottle includes a built-in straw and handle. That makes it the go-to choice for recipients on the go.

Available from 36 units
Capacity: 24 oz.
Product size: 9.61" H x 2.88" Dia
Material: Aluminium
Product colors: Blue, Gunmetal, Red, Silver



AS LOW AS
\$2.77
\$2.22*
EACH

TAKE 20% OFF
with code
DRINKWARE20 at
www.pens.com/drinkware20



TEAM UP WITH THE BEST

KAI STAINLESS STEEL WATER BOTTLE
(WDC)



Great branding without breaking a sweat?
It's easy with this large capacity bottle
featuring sturdy, stainless steel construction.

Available from 20 units

Capacity : 40 oz

Product Size : 10.24" H x 3.54" Dia

Material: Stainless Steel

Product Color : Black, Chrome, White

Lid color : Black



BUILT-IN HANDLE ON LID



AS LOW AS
\$10.86

\$8.69*

EACH

With Pens.com You're in good hands

LOW, FACTORY-DIRECT PRICING

We know that every dollar counts as a small business. That's why we make our own products to save you money.

FLEXIBILITY FOR BUSINESSES

We're here to help you get what you need with small order quantities and lots of ways to pay.

COMMITTED CUSTOMER SERVICE

We're all about helping small businesses do big things. Since 1966, we've helped almost 7 million people market themselves.

OUR PERSONAL PROMISE

We're not happy unless you are! If your order is not exactly how you approved it, our Personal Promise has your back. Contact our **Customer Care Team** at **800-854-1000** and we'll make it right.

*The offers in this catalog apply to the website and cannot be combined with other offers. Valid until March 31, 2023 on the drinkware collection at www.pens.com/drinkware20 while stocks last.

20% OFF

Drinkware
Collection

USE CODE

DRINKWARE20

at

[www.pens.com/
drinkware20](http://www.pens.com/drinkware20)

Or scan the QR code!



"I'm on my 4th order and just waiting for it to arrive. Pens.com makes it simple and easy with reasonable pricing. Their customer service is outstanding!! My experience is they provide quality items with quality service."

BOTTLE UP THE LATEST TREND

NYLA STAINLESS STEEL
VACUUM-INSULATED WATER
BOTTLE (WBO)



Let them accessorize with your brand! Your recipients will love the modern design, sturdy handle, and warm wood accent of this stainless steel water bottle.

Available from 24 units

Capacity: 17 oz

Product size: 8.27" H x 2.83" Dia

Material: Stainless steel

Product colors: Black, Light Blue, Silver, White



WIDE-MOUTH OPENING MAKES FOR
EASY FILLING, CLEANING, AND DRINKING



TAKE 20% OFF

with code

DRINKWARE20 at

www.pens.com/drinkware20



AS LOW AS
\$7.20

\$5.76*

EACH